

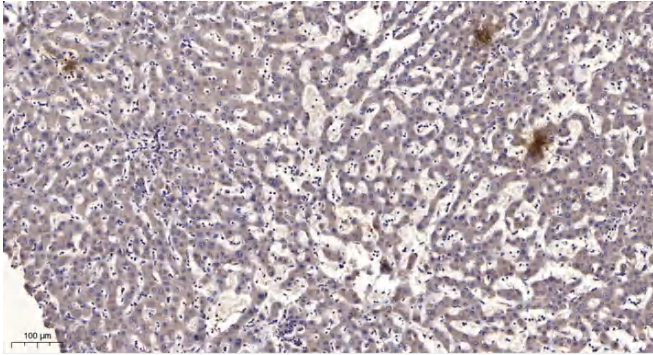


# Kallikrein-14 (Cleaved-Ile25) rabbit pAb

<b>Catalog No</b>	YP-Ab-04386
<b>Isotype</b>	IgG
<b>Reactivity</b>	Human;Mouse;Rat
<b>Applications</b>	WB;IHC
<b>Gene Name</b>	KLK14 KLKL6
<b>Protein Name</b>	Kallikrein-14 (Cleaved-Ile25)
<b>Immunogen</b>	Synthesized peptide derived from human Kallikrein-14 (Cleaved-Ile25)
<b>Specificity</b>	This antibody detects endogenous levels of Human,Mouse,Rat Kallikrein-14 (Cleaved-Ile25, protein was cleaved amino acid sequence between 24-25 )
<b>Formulation</b>	Liquid in PBS containing 50% glycerol, 0.5% BSA and 0.02% sodium azide.
<b>Source</b>	Polyclonal, Rabbit,IgG
<b>Purification</b>	The antibody was affinity-purified from rabbit serum by affinity-chromatography using specific immunogen.
<b>Dilution</b>	WB 1:500-2000;IHC-p 1:50-300
<b>Concentration</b>	1 mg/ml
<b>Purity</b>	≥90%
<b>Storage Stability</b>	-20°C/1 year
<b>Synonyms</b>	Kallikrein-14 (hK14;EC 3.4.21.-;Kallikrein-like protein 6;KLK-L6)
<b>Observed Band</b>	26kD
<b>Cell Pathway</b>	Secreted, extracellular space .
<b>Tissue Specificity</b>	Highly expressed in CNS, bone marrow and fetal liver. Also expressed in breast, thyroid, kidney, colon, pancreas, spleen, prostate, uterus, small intestine, placenta and skeletal muscle. Among 40 tissues tested, the highest expression is detected in skin followed by breast and prostate (at protein level). Expressed in stratum corneum by sweat ducts and sweat glands and detected in sweat (at protein level).
<b>Function</b>	
<b>Background</b>	
<b>matters needing attention</b>	Avoid repeated freezing and thawing!
<b>Usage suggestions</b>	This product can be used in immunological reaction related experiments. For more information, please consult technical personnel.



## Products Images



Immunohistochemical analysis of paraffin-embedded human liver cancer. 1, Antibody was diluted at 1:200(4° overnight). 2, Tris-EDTA,pH9.0 was used for antigen retrieval. 3,Secondary antibody was diluted at 1:200(room temperature, 45min).